

Step 1: Create your flash file with KoolMoves. Once done, export it as a SWF file to a location of your choice. Remember the location you export it to. (see fig. 1)

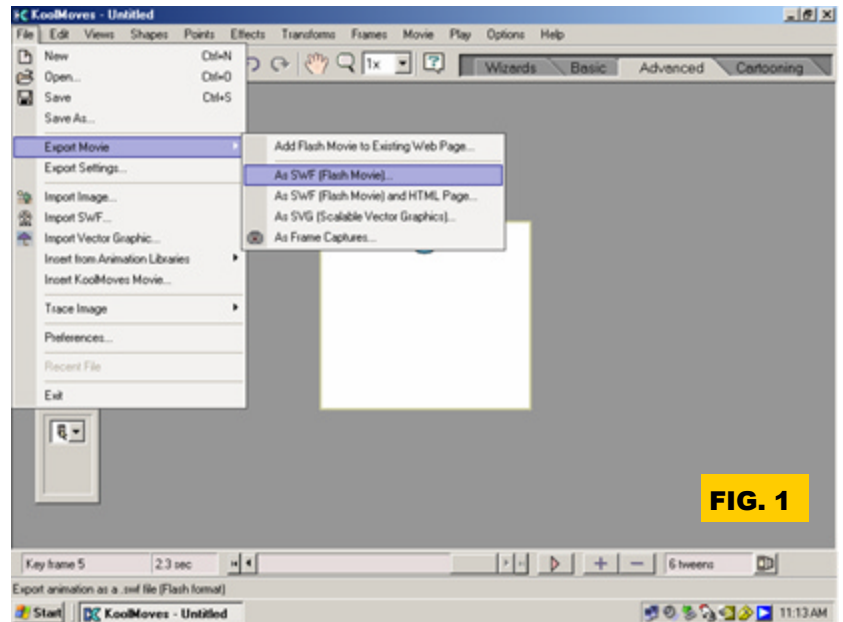


FIG. 1

Step 2: Close Koolmoves and open Fusion 7.5 to the site you want to insert the flash file in. Make certain the **ADVANCED TOOLBAR** is turned on and showing on the screen. (see fig. 2)

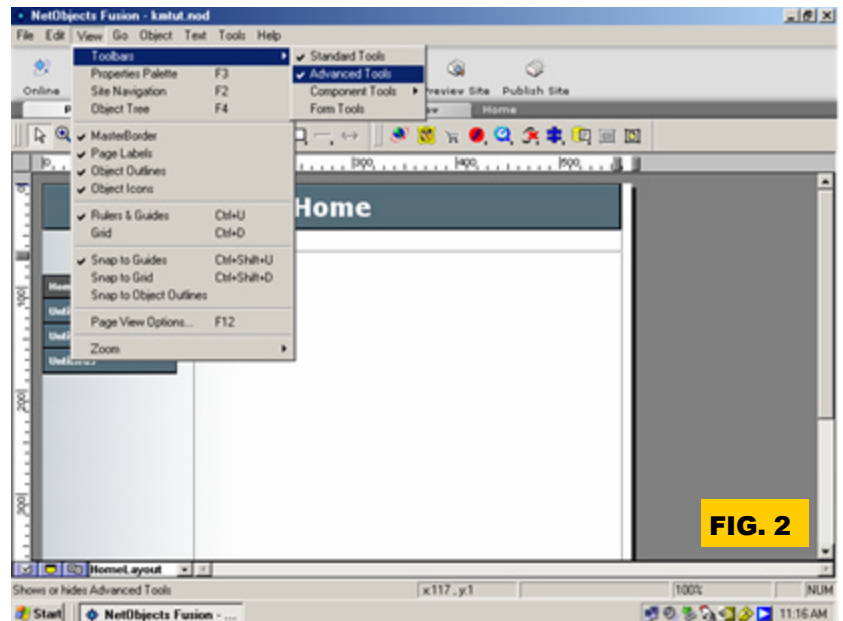


FIG. 2

Step 3: Click the Flash component on the advanced toolbar. Use the cursor to select the area you want to insert the flash file by clicking and dragging an area selection box. You will be prompted to choose a SWF file (see fig. 3). Go to the location you exported the SWF to from KoolMoves in Step 1 and choose it. Click OPEN. Once the file is selected and opened, your site will have a Flash placeholder (as shown in fig. 4). The placeholder auto sizes to the size of your Flash file.



This is the Flash Component Button on the Advanced toolbar

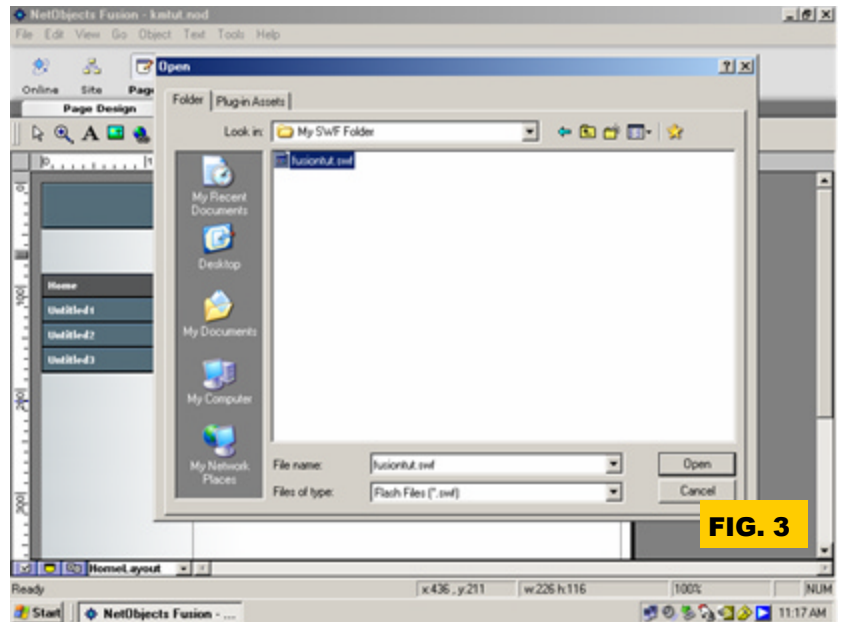


FIG. 3

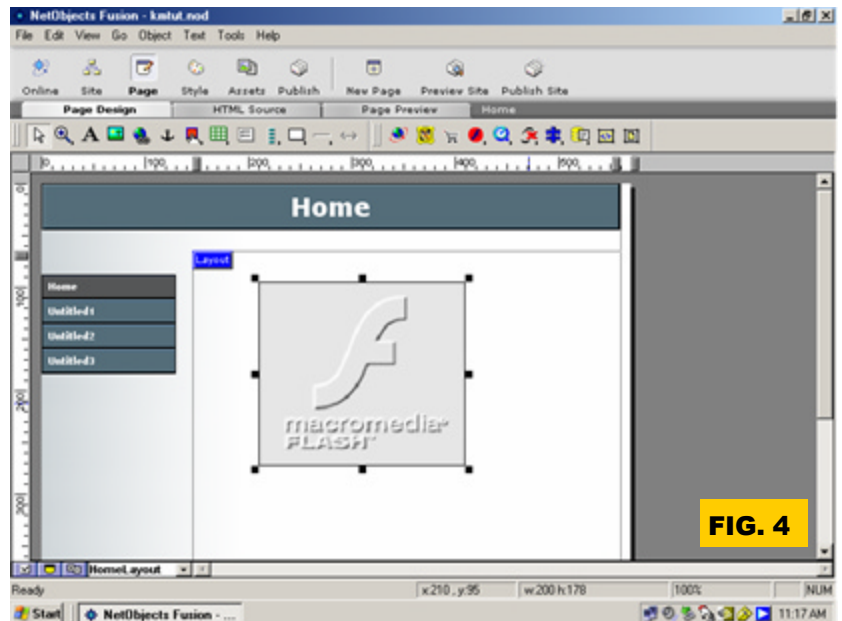


FIG. 4

Step 4: Right-click the Flash placeholder and choose OBJECT PROPERTIES. The Flash properties box will pop up (see fig. 5 & 6).

The GENERAL property options are:

File: Displays the filename of the Flash file. Clicking the BROWSE button will allow you to choose a different file.

Alt Tag: Enter text to be displayed in the event a user's browser does not have Flash display capability. Normally with Flash, users are prompted to install the Flash Player if it is not present. Alt Tags also help with search engine and handicapped display.

Version: Enter the version of Flash required to view the Flash movie. Normally this is set by default. If you use advanced features of newer Flash capabilities, you would need to change this to trigger the viewer's browser to update to the required version player.

The CONTROLS property options are:

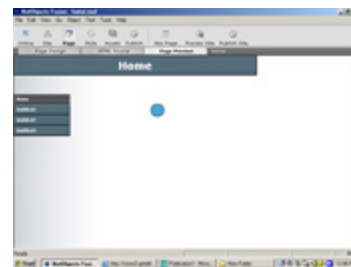
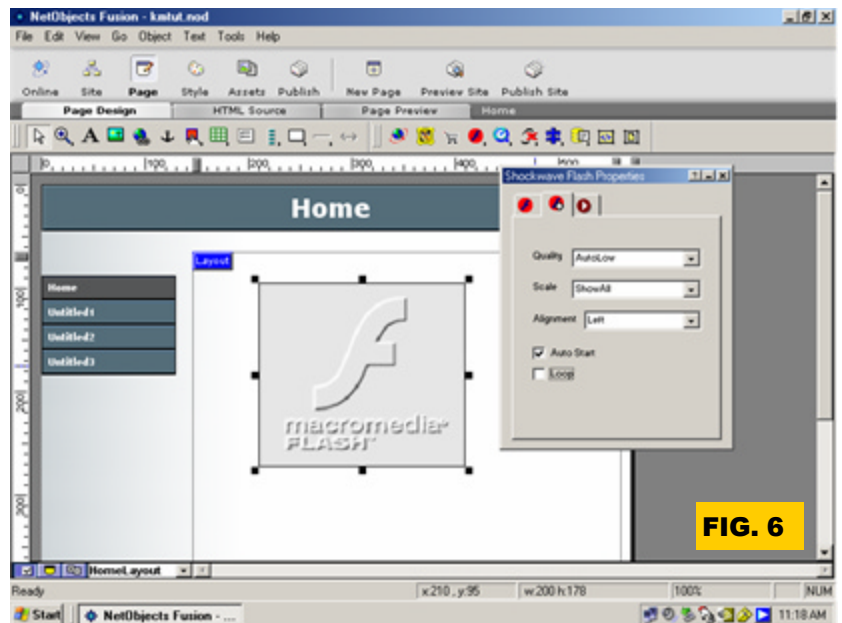
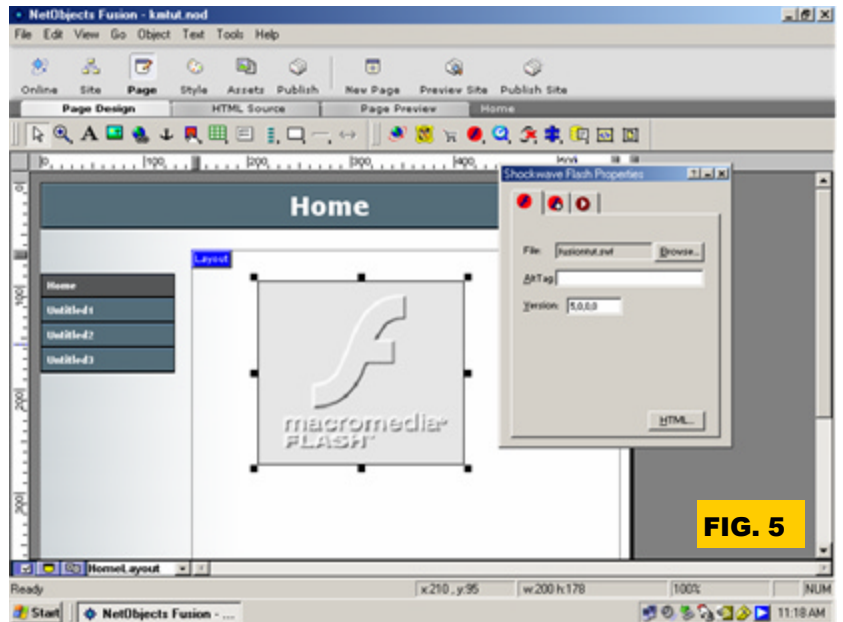
Quality: Select a quality type for this Shockwave Flash movie from the drop-down list. AutoLow sets the default to normal quality. The host computer uses high quality if it has the capacity. AutoHigh starts the movie in high quality. The host computer uses low quality if it cannot display the movie in high quality. High anti-aliases the movie on any computer. Low uses a normal quality so the movie displays quickly. Normally this should be set to AUTOHIGH.

Scale: Select a scale setting for this Shockwave Flash movie from the drop-down list. ShowAll displays the movie within the frame but maintains the image proportions. NoBorder fits the movie within the frame so it fills the frame but maintains the ratio of the animation. Some edges of the animation might be trimmed. ExactFit displays the movie exactly within the frame.

Alignment: Specify the Shockwave Flash movie's alignment within the frame, Left, Right, or Top.

AutoStart: Select this option to play the Shockwave Flash movie automatically when the site visitor opens the page.

Loop: When this option is selected, the Shockwave Flash movie is replayed each time it ends. This is useful if you need to loop the movie, but did not set it to loop within KoolMoves.



When you are done setting properties, click PREVIEW and enjoy!